



Description

Property Details

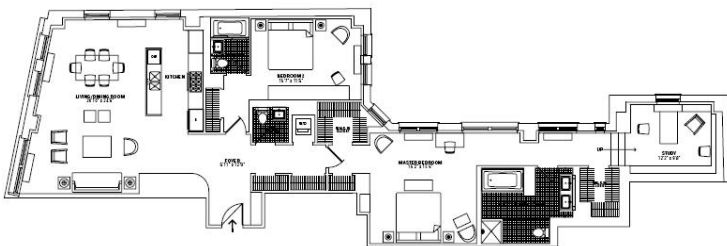
The Cass Gilbert designed 225 Lafayette is a timeless Beaux Arts masterpiece that has been transformed into the ultimate residential setting. Luxurious finishes include: Brazilian Walnut flooring, oversized tilt and turn windows, Miele, Subzero, Bosch, Varena Poliform, Dornbracht and Kohler.

This sprawling two bedroom, two bath apartment with den/office and powder room features an expansive master bedroom suite, generously sized walk in closets, a gorgeous open kitchen and 13 windows that highlight its northeast exposures. Perfectly located between Soho and Nolita at the epicenter of downtown's best: shopping, restaurants and nightlife, this incredibly rare landmark condo is everything you've been looking for.

Square Ft:	2,057	Type:	Condo
Bedrooms:	2	Converted:	2005
Bathrooms:	2.5	Year Built:	1926
Home Office:	1	Units:	40
Doorman:	Yes	Roof Terrace:	Yes

Floor Plan

Financial/Contact Info



Residence D
FLOORS 5-9

SOHO CONDO

Price: \$2,195,000
CC: \$1,660 per mo.
RE Tax: \$1,485 per mo.

Exclusive Broker:
Peter McCuen & Associates

Peter McCuen Jim St. Andre
917 940-2020 646 732-8162
peter@petermccuen.com jim@petermccuen.com